

SCOUT, HUNTER and EXPLORER

AEROFLEX

A FAMILY OF BROADBAND SIGNAL ANALYZERS

Other analyzers tell you what happened.
The Aeroflex BSA shows you **why**.

Aeroflex introduces its new family of low-cost Broadband Signal Analyzers (BSA):

Scout

CS1104 Portable Broadband Signal Analyzer

- Record and analyze while stationary or mobile
- 20-3000 MHz RF coverage
- 40 MHz instantaneous bandwidth
- Digital tuner (40 MHz-20 kHz selectable bandwidths)
- 8 GB signal capture RAM
- 1 TB removable data storage disk
- 60 GB solid state system disk
- GPS (location, time)
- Advanced capture and analysis software
- RF low noise, high gain amplification and preselect filtering
- Weight: 40 lbs
- Dimensions: 17"(L) x 14"(H) x 8.5"(D)



Hunter

CS1207 Broadband Signal Analyzer

- 10-6000 MHz RF coverage
- 70 MHz instantaneous bandwidth
- Digital tuner (70 MHz-41 kHz selectable bandwidths)
- +15 to -10 dBm max input power
- 32 GB signal capture RAM
- 8 TB removable data storage RAID
- Advanced capture and analysis software
- 24" monitor with graphics card
- Rack mount

Explorer

CS1247 Broadband Signal Analyzer

- 10-6000 MHz RF coverage
- Operator selectable 70 MHz (narrow) or 400 MHz (wide) instantaneous bandwidth
- Digital tuner (70 MHz-41 kHz selectable bandwidths)
- +15 to -10 dBm max input power
- 32 GB signal capture RAM
- 8 TB removable data storage RAID
- Advanced capture and analysis software
- 24" monitor with graphics card
- Rack mount



SCOUT, HUNTER and EXPLORER

A FAMILY OF BROADBAND SIGNAL ANALYZERS

These systems are the latest in the Aeroflex BSA family that customers have relied on for years. Aeroflex BSAs have been used to analyze signals from a wide range of applications, including:

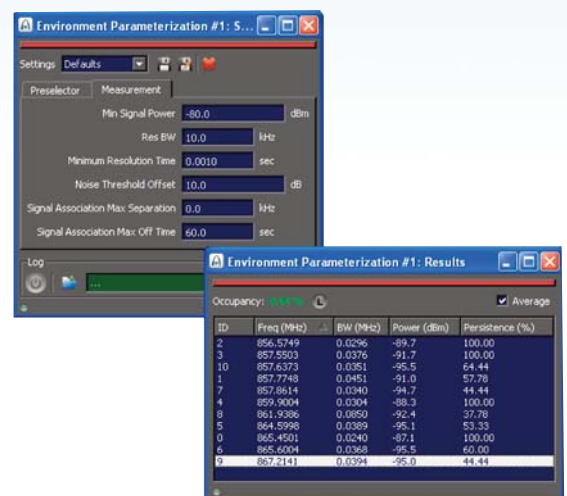
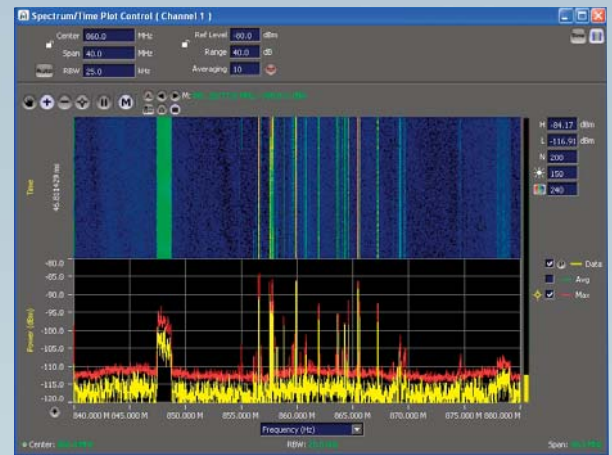
- Radar
- Communications
- EW/ECM
- Spectrum monitoring
- Propagation measurement
- Statistical and specific electromagnetic environments (EME) analysis

Standard Software Features

- Interactive spectrum and spectrogram waterfall plots for analysis
- Modulation Domain analysis displays time, AM, FM, and PM waveforms. Calculates modulation parameters (current/average) and estimates modulation type (CW, AM, FM, pulse, other)
- Channel Power measurement uses operator-defined band pass filters feeding virtual power meters
- Fixed band or scanning spectrum analysis
- Strip charts any measured parameter and records to disk
- Measurement markers and Signal Notepad ease interactive measurements and analysis

Optional Software

- Recording sequencer performs multiple recordings directed by operator-specified script
- Pulse analysis for CW, chirp, and PSK signals
- Analysis of continuous and hopped AM, FM, PM, FSK, ASK, PSK, and QAM communications signals
- Environmental Signal Parameter (ESP) software performs automatic signal detection and measurement of frequency, power, bandwidth, and on-time statistics.
- Standalone Mission Analysis software supports easy navigation of multiple mission collections while interfacing with the full BSA signal analysis suite. Mission Analysis also supports batch collection processing. Mission Analysis is an ideal tool for EME analysis.



For more information, please contact: +1 408 873 1001/+1 800 835 2352 (Toll free) • bsa@aeroflex.com
<http://www.aeroflex.com/bsa>