



7311 Lector Basic
7312 Lector Enhanced
7315 Scriptor

Getting Started Manual

Notice Every effort was made to ensure that the information in this document was accurate at the time of printing. However, information is subject to change without notice, and Aeroflex reserves the right to provide an addendum to this document with information not available at the time this document was created.

Copyright © Copyright 2010 Aeroflex GmbH. All rights reserved. Aeroflex and its logo are trademarks of Aeroflex. All other trademarks and registered trademarks are the property of their respective owners. No part of this guide may be reproduced or transmitted electronically or otherwise without written permission of the publisher.

Trademarks Aeroflex is a trademark of Aeroflex Incorporated in the U.S.A. and other countries.

Specifications, terms and conditions are subject to change without notice. All trademarks and registered trademarks are the property of their respective companies.

Ordering information This guide is issued as part of the 7310 Lector and Scriptor family of software products. The ordering number for a published guide is AG 294 310. The ordering number for the product depends on the exact model as follows:

Table 1 Lector and Scriptor ordering numbers

Model	Ordering number
7311 Lector Basic	AG 897 309
7312 Lector Enhanced	AG 897 310
7315 Scriptor	AG 897 311

Table of Contents

About This Guide		IV
	Purpose and scope	V
	Assumptions	V
	Related information	V
	Technical assistance	V
	Conventions	V

Chapter 1	Preparation	1
	Scope of delivery	2
	Software requirements	2
	Hardware requirements.	2
	Setting up the hardware	3
	TCP/IP.	4
	Lector Enhanced and Scriptor	4

Chapter 2	Installation	5
	Setting up Lector with the 4107S	6
	Setting up Lector with the 4201S or 4202S	10
	Setting up Lector with the 2201 ProLock	14
	Setting up Lector with the 3100 Mobile Fault Finder	20

Chapter 3	First steps	25
	Installing the manufacturer-specific test scripts and the coupling factor database	26
	Setting up and starting a test.	28
	Finding unused channels for testing	31

Appendix A	End-User License Agreement	33
-------------------	-----------------------------------	----

Publication History		35
----------------------------	--	----

About This Guide

This section contains the following basic information:

- “Purpose and scope” on page v
- “Assumptions” on page v
- “Related information” on page v
- “Technical assistance” on page v
- “Conventions” on page v

Purpose and scope

The purpose of this guide is to help you successfully install the Lector and Scriptor software with software drivers for instrument remote control. Additionally, this guide provides the terms and conditions of the licensing agreement.

Assumptions

This guide is intended for novice users who want to use the Lector and Scriptor effectively and efficiently. We are assuming that you have basic computer experience and are familiar with basic telecommunication concepts and terminology.

Related information

Use this guide in conjunction with the following information:

AG 294 309: Lector & Scriptor user's guide

Technical assistance

If you need assistance or have questions related to the use of this product call Aeroflex's technical support. You can also contact Aeroflex by e-mail at support-muc@aeroflex.com.

Conventions

This guide uses naming conventions and symbols, as described in the following tables.

Table 1 **Typographical conventions**

Description	Example
User interface actions appear in this typeface .	On the Status bar, click Start .
Buttons or switches that you press on a unit appear in this TYPEFACE .	Press the ON switch.

Table 1 **Typographical conventions (Continued)**

Description	Example
Code and output messages appear in this typeface .	All results okay
Text you must type exactly as shown appears in this typeface .	Type: a: \set.exe in the dialog box.
Variables appear in this <typeface> .	Type the new <hostname> .
Book references appear in this typeface .	Refer to Newton's Telecom Dictionary
A vertical bar means "or": only one option can appear in a single command.	platform [a b e]
Square brackets [] indicate an optional argument.	login [platform name]
Slanted brackets <> group required arguments.	<password>

Table 2 **Keyboard and menu conventions**

Description	Example
A plus sign + indicates simultaneous keystrokes.	Press Ctrl+s
A comma indicates consecutive keystrokes.	Press Alt+f,s
A slanted bracket indicates choosing a submenu from menu.	On the menu bar, click Start > Program Files .

Preparation

1

This chapter describes how to set up the Lector and Scriptor. The topics discussed in this chapter are as follows:

- [“Scope of delivery” on page 2](#)
- [“Software requirements” on page 2](#)
- [“Hardware requirements” on page 2](#)
- [“Setting up the hardware” on page 3](#)

Chapter 1 Preparation

Scope of delivery

Scope of delivery

When unpacking Lector & Scriptor, ensure that you do not miss any of the following items:

- Lector & Scriptor software CD
- Manual CD
- USB dongle (7312 Lector Enhanced and 7315 Scriptor only)

Software requirements

Lector and Scriptor can be installed and run on every PC with Microsoft Windows XP, Vista or Windows 7. You will need to log in with administrator rights to install the software.

To control a 4400 Series Mobile Phone Tester, the instrument will need firmware version 6.20 or higher. In order to take advantage of all the latest features, the latest firmware is required.

To control a 3100 Mobile Fault Finder, the instrument will need firmware version 11.20 or higher. In order to take advantage of all the latest features, the latest firmware is required.

To make use of the Bluetooth and the Intersystem Handover capabilities, software version 12.00 or higher of the 4400 or 3100 is required.

Hardware requirements

Before installing Lector and Scriptor on a PC, make sure that the PC has

- at least 60 MB of free hard disk space
- a CD drive
- a free RS-232 or USB port (for initial setup of the 3100 Mobile Fault Finder)
- a free USB port for the USB dongle if you want to install 7312 Lector Enhanced and 7315 Scriptor
- a screen size of at least 1024 x 768 pixels

In addition, the PC needs an interface to the instrument to be controlled. Ensure that both the PC and the instrument can be connected using one of the following interfaces supported by Lector and Scriptor:

- TCP/IP
- GPIB (National Instruments interface)
- USB
- RS-232

Setting up the hardware

Before starting a test, the PC should be connected to the instrument and the USB dongle should be installed (Lector Enhanced and Scriptor only). The table below summarizes the remote control interfaces supported.

Table 3 Interfaces supported by the instrument types

	RS-232/ USB	TCP/IP	GPIB
2201	✓	✓	
2303		✓	
3100	✓	✓	✓ ^a
3110	✓	✓	
4100 series	✓		
4200 series	✓		
4300 series	✓		✓
4400 series	✓	✓ ^b	✓

a. Optional (3180 GPIB - IEEE 488.2 Option required)

b. Instruments with a serial number below 0911001 require the 4478 TCP/IP Option

Please note the following particularities.

Chapter 1 Preparation

Setting up the hardware

TCP/IP The LAN connector of your instrument can be connected with the PC in two different ways:

Existing TCP/IP network with router or hub: Use a CAT5 or CAT6 LAN cable to connect the instrument to the LAN. Similarly, also connect the PC to the LAN.

Point-to-point connection: Use a crossed-line LAN cable to directly connect the instrument to the PC.

Lector Enhanced and Scriptor To make use of the advanced features of 7312 Lector Enhanced and 7315 Scriptor, the USB dongle provided as part of the product must be installed.

After installing, but before running the software, slide the USB dongle into a free USB port of the PC.

After starting the Lector and Scriptor software, the title bar of the Lector or Scriptor menu should indicate the name of the product you have purchased, i.e. either "Aeroflex 7312 Lector Enhanced" or "Aeroflex 7315 Scriptor".

Installation

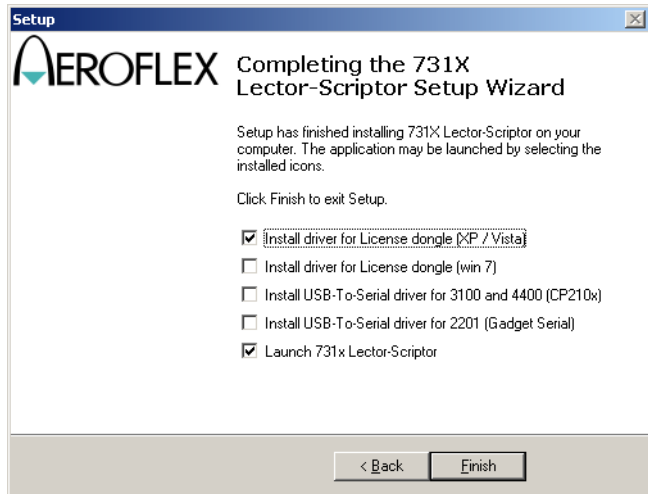
2

This chapter describes how to install Lector and Scriptor. The topics discussed in this chapter are as follows:

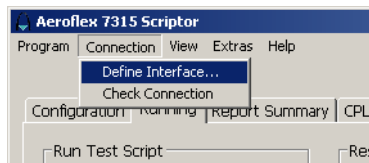
- [“Setting up Lector with the 4107S” on page 6](#)
- [“Setting up Lector with the 4201S or 4202S” on page 10](#)
- [“Setting up Lector with the 2201 ProLock” on page 14](#)
- [“Setting up Lector with the 3100 Mobile Fault Finder” on page 20](#)

Setting up Lector with the 4107S

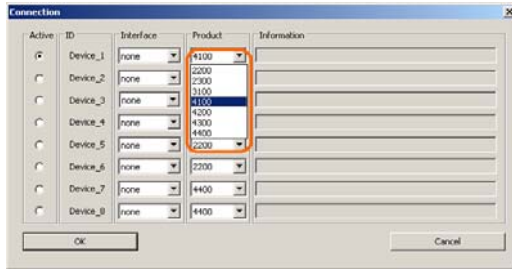
- 1 Insert the Lector & Scriptor installation CD in the CD drive of your computer.
- 2 If the Autostart menu appears, click on "Install Lector or Scriptor".
Alternatively, use the Windows Explorer to start the Setup.exe program from the CD.
- 3 Follow the onscreen instructions during the installation. In most cases it is advisable to accept the proposed settings. Make sure the HASP HL driver is installed.



- 4 When the installation is completed, start Lector (if it does not start automatically). Define the connection between the PC and your instrument by selecting **Connection > Define Interface**.



- 5 Select the product: **4100**.



- 6 Select the interface: **USB/RS-232**.

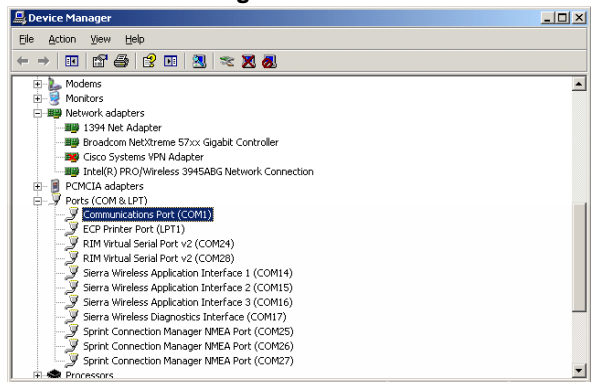


- 7 Connect the instrument to the PC using the selected connection.

- 8 Define the interface settings for the RS-232 connection:

- a Select the COM port.

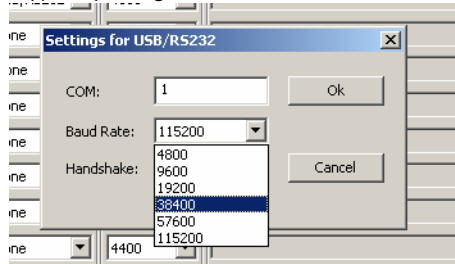
The COM port is usually COM1 when RS-232 is used. If any USB-to-RS-232 adapter is used, you can look up the COM port at: **Start > Control Panel > System > Hardware > Device Manager > Ports**.



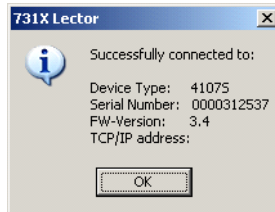
Chapter 2 Installation

Setting up Lector with the 4107S

- b Change the baud rate to the one set up at the 4100 (38400 is typically being used).



- c Click **OK**.
- 9 Click **OK** again to close the Connection menu.
- 10 Wait for the confirmation that the instrument has been found:

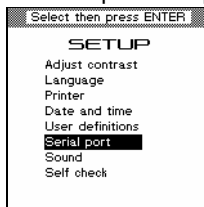


If the message does not appear within half a minute, proceed as follows:

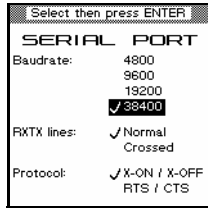
- a Check the configuration settings of your 4100, and change accordingly.



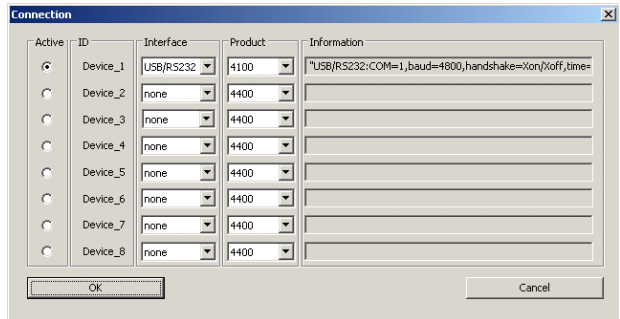
- b Press the **SETUP** button on the 4100. The Setup menu appears.



- c Select Serial Port in the Setup menu and press ENTER.
- d Adjust the Serial Port settings according to the screenshot below:



- e In the Lector Connection pop-up menu, click **OK**.



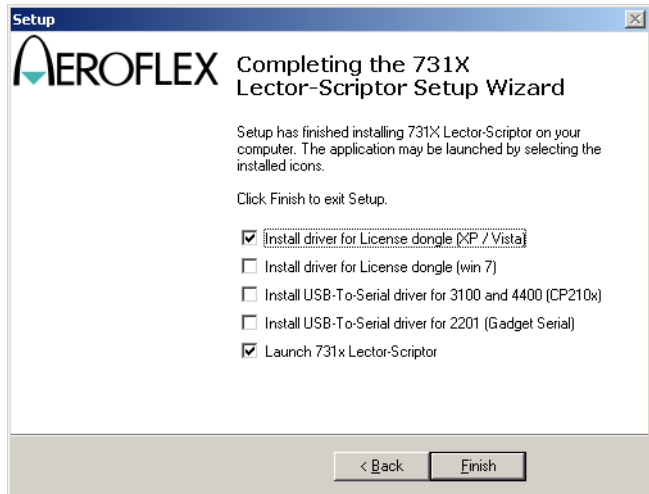
- 11 Continue with [“Installing the manufacturer-specific test scripts and the coupling factor database”](#) on page 26.

Chapter 2 Installation

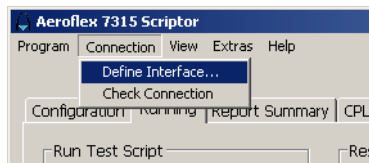
Setting up Lector with the 4201S or 4202S

Setting up Lector with the 4201S or 4202S

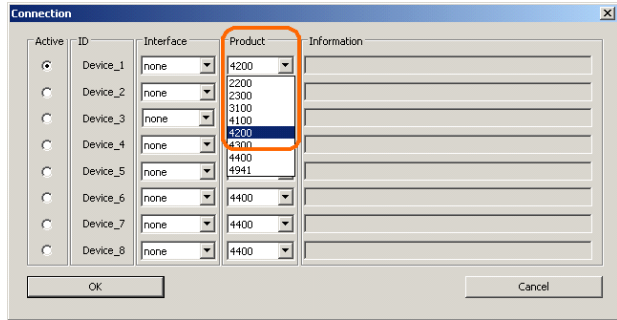
- 1 Insert the Lector & Scriptor installation CD in the CD drive of your computer.
- 2 If the Autostart menu appears, click on "Install Lector or Scriptor".
Alternatively, use the Windows Explorer to start the Setup.exe program from the CD.
- 3 Follow the onscreen instructions during the installation. In most cases it is advisable to accept the proposed settings. Make sure the HASP HL driver is installed.



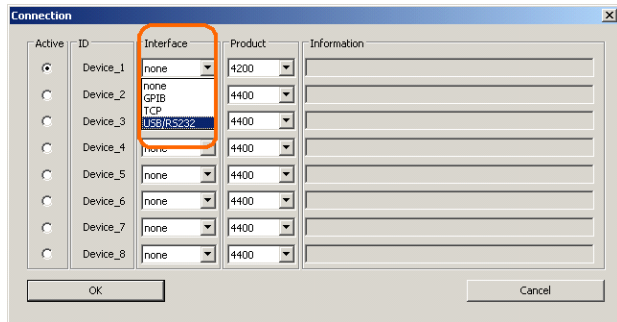
- 4 When the installation is completed, start Lector (if it does not start automatically). Define the connection between the PC and your instrument by selecting **Connection > Define Interface**.



- 5 Select the product: **4200**.



- 6 Select the interface: **USB/RS-232**.

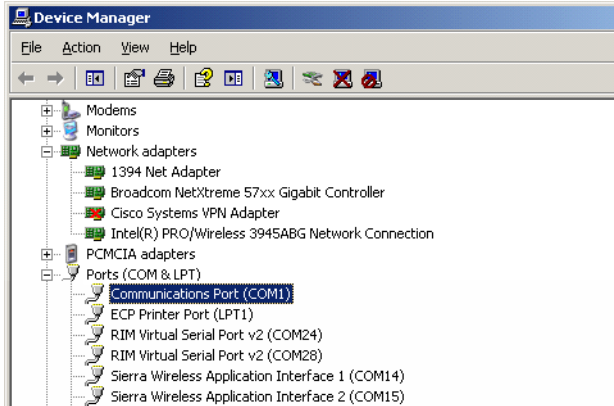


- 7 Connect the instrument to the PC using the selected connection.
- 8 Define the interface settings for the RS-232 connection:
- Select the COM port.
The COM port is usually COM1 when RS-232 is used. If any USB-to-RS-232 adapter is used, you can look up the

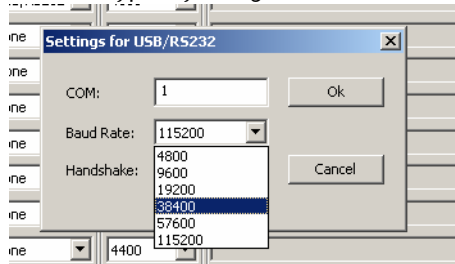
Chapter 2 Installation

Setting up Lector with the 4201S or 4202S

COM port at: **Start > Control Panel > System > Hardware > Device Manager > Ports**



- b Change the baud rate to the one set up at the 4200 (38400 is typically being used).



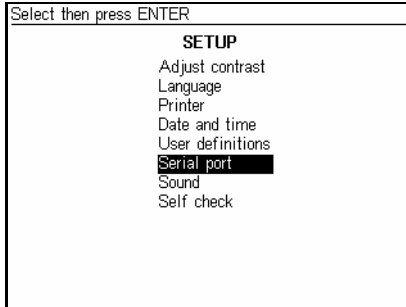
- c Click **OK**.
- 9 Click **OK** again to close the Connection menu.
- 10 Wait for the confirmation that the instrument has been found:



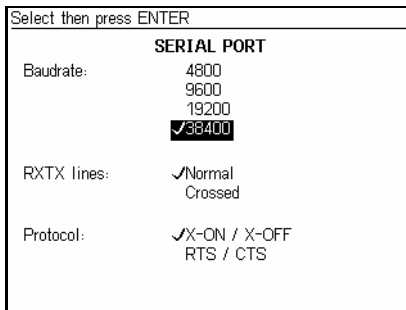
If the message does not appear within half a minute, proceed as follows:

- a Check the configuration settings of your 4200, and change accordingly.

- b On the 4200, press the **SETUP** button.



- c Select **Serial Port** in the Setup menu and press **ENTER**. The Serial Port menu appears.
- d Adjust the Serial Port settings according to the screenshot below:



- e In the Lector Connection pop-up menu, click the **OK** button.



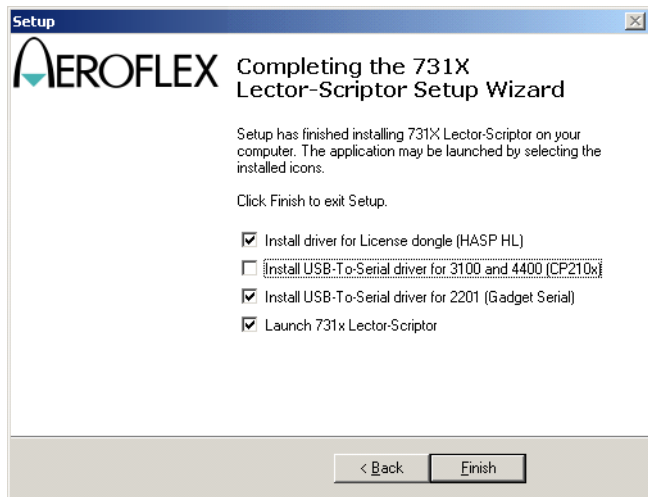
- 11 Continue with [“Installing the manufacturer-specific test scripts and the coupling factor database”](#) on page 26.

Chapter 2 Installation

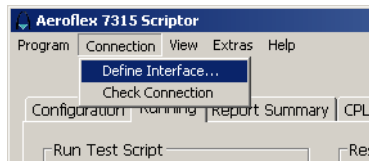
Setting up Lector with the 2201 ProLock

Setting up Lector with the 2201 ProLock

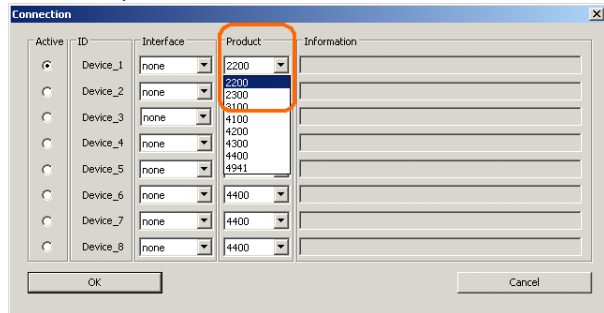
- 1 Insert the Lector & Scriptor installation CD in the CD drive of your computer.
- 2 If the Autostart menu appears, click on "Install Lector or Scriptor".
Alternatively, use the Windows Explorer to start the Setup.exe program from the CD.
- 3 Follow the onscreen instructions during the installation. In most cases it is advisable to accept the proposed settings. Make sure the HASP HL driver and the USB-to-serial driver for the 2201 are installed.



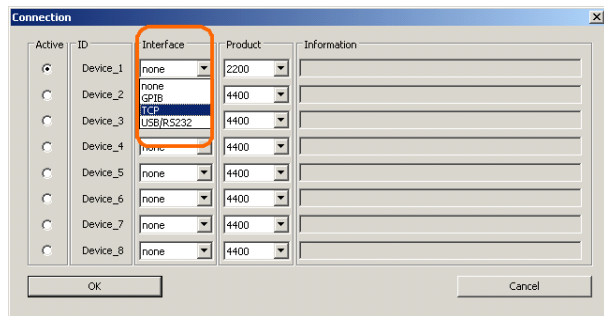
- 4 When the installation is completed, start Lector (if it does not start automatically). Define the connection between the PC and your instrument by selecting **Connection > Define Interface**.



5 Select the product: **2200**.



6 Select the interface: **USB/RS-232** or **TCP**.



7 Connect the instrument to the PC using the selected connection.

8 Define the interface settings for the selected connection (either RS-232 or USB or TCP/IP):

a RS-232

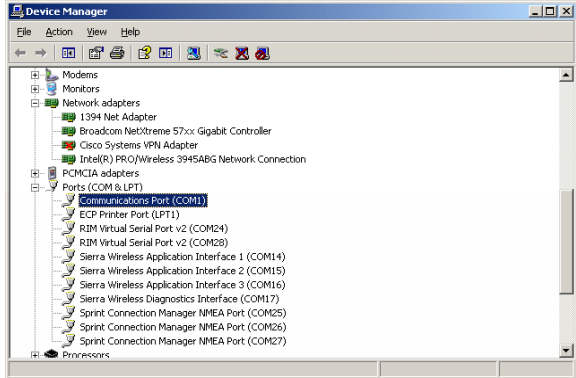
1 Select the COM port.

The COM port is usually COM1 when RS-232 is used. If any USB-to-RS-232 adapter is used, you can look up the COM port at:

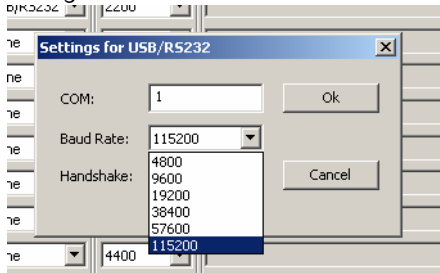
Start > Control Panel > System > Hardware > Device Manager > Ports

Chapter 2 Installation

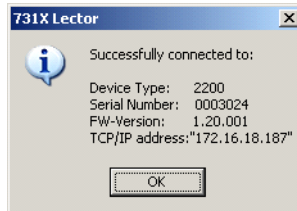
Setting up Lector with the 2201 ProLock



2 Change the baud rate to **115200**.



- 3 Click **OK**.
- 4 Click **OK** again to close the Connection menu.
- 5 Wait for the confirmation that the instrument has been found:



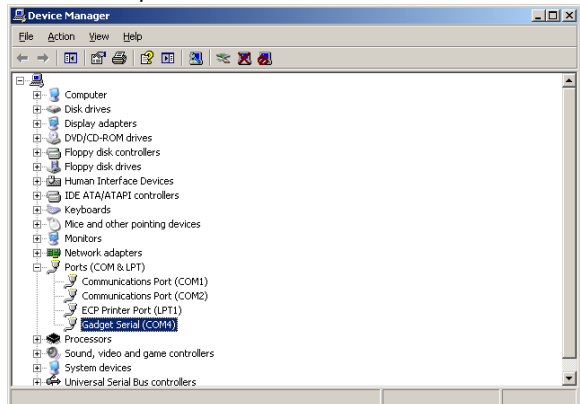
If the 2200 does not respond within half a minute, please check the connection to the instrument.

b USB

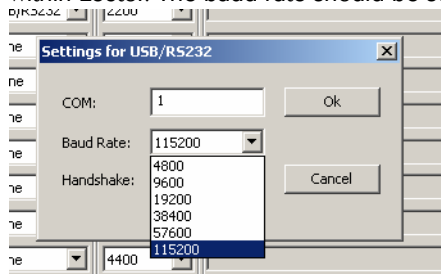
- 1 Select the COM port.

You can look up the COM port with the device manager: **Start > Control Panel > System > Hardware > Device Manager > Ports**

Look for the Gadget Serial connection and check which COM port is used for it.

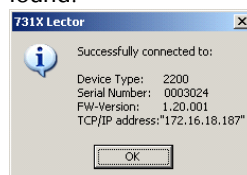


Apply the COM port number in the Connection menu within Lector. The baud rate should be set to **115200**.



Click **OK**.

- 2 Click **OK** again to close the Connection menu.
- 3 Wait for the confirmation that the instrument has been found:



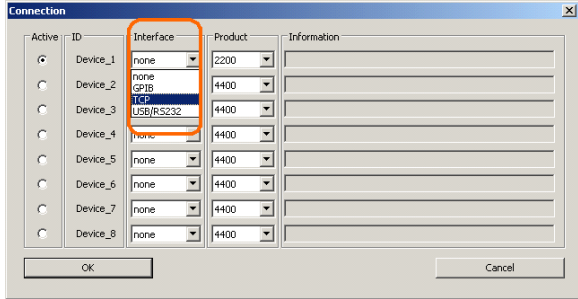
Chapter 2 Installation

Setting up Lector with the 2201 ProLock

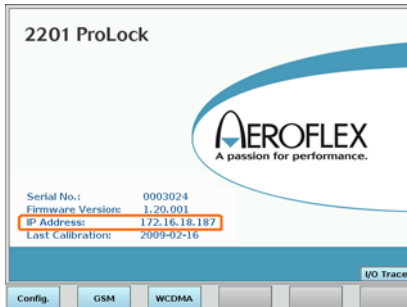
If the 2200 does not respond within half a minute, please check the connection to the instrument.

c TCP/IP

1 Select **TCP** for the interface.



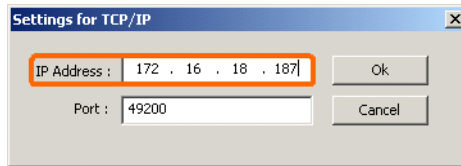
2 Read the ProLock's IP address which is displayed in the start menu of the 2201 ProLock.



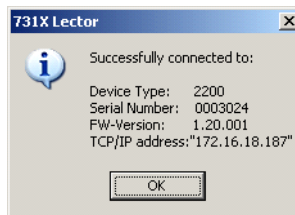
If the ProLock displays an IP address of 0.0.0.0, it is not properly connected to the LAN or the computer. Check the configuration of the 2201 ProLock, the Ethernet settings and the cable connections.



- 3 Enter the IP address in the Settings field for TCP/IP, and click **OK**.



- 4 In the Lector Connection pop-up menu, click the **OK** button.
- 5 Wait for the confirmation that the instrument has been found:



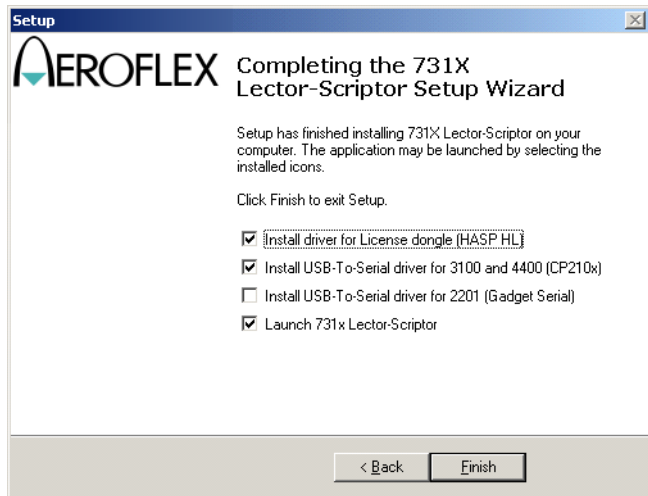
- 6 If the 2200 does not respond please check the connection to the instrument.
- 9 Continue with ["Installing the manufacturer-specific test scripts and the coupling factor database"](#) on page 26.

Chapter 2 Installation

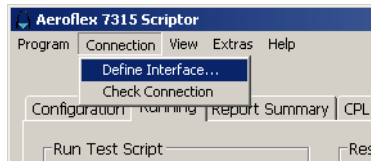
Setting up Lector with the 3100 Mobile Fault Finder

Setting up Lector with the 3100 Mobile Fault Finder

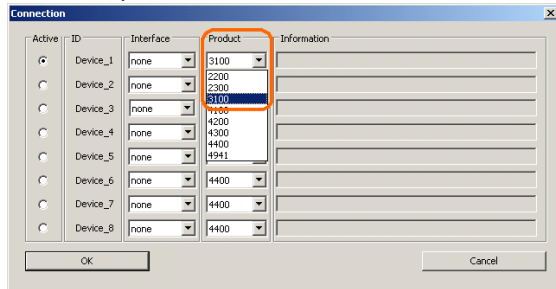
- 1 Insert the Lector & Scriptor installation CD in the CD drive of your computer.
- 2 If the Autostart menu appears, click on "Install Lector or Scriptor".
Alternatively, use the Windows Explorer to start the Setup.exe program from the CD.
- 3 Follow the onscreen instructions during the installation. In most cases it is advisable to accept the proposed settings. Make sure the HASP HL driver and the USB-to-serial driver for 3100 and 4400 are installed.



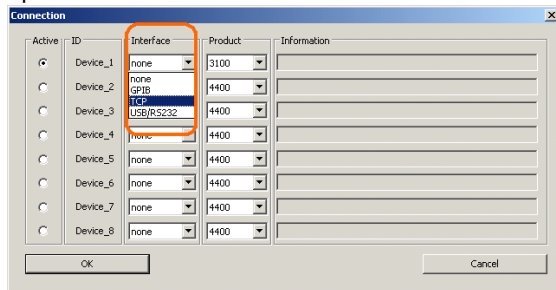
- 4 When the installation is completed, connect the instrument to the PC using the selected connection.
- 5 Start Lector (if it does not start automatically). Define the connection between the PC and your instrument by selecting **Connection > Define Interface.**



6 Select the product: **3100**.



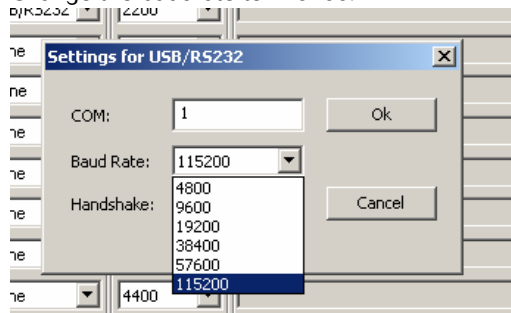
7 Select the interface: **USB/RS-232, TCP or GPIB** (3100 option).



8 Define the interface settings for the selected connection (USB, RS-232, TCP or GPIB):

a RS/232

- 1 Select the COM port.
The COM port is usually COM1 when RS-232 is used.
- 2 Change the baudrate to **115200**.



3 Click **OK**.

Chapter 2 Installation

Setting up Lector with the 3100 Mobile Fault Finder

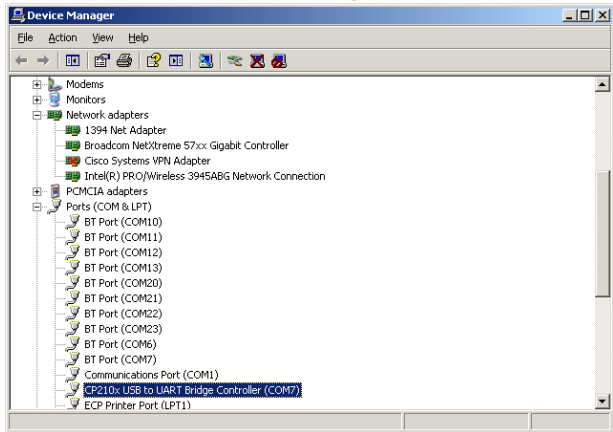
- 4 Click **OK** again to close the Connection menu.
- 5 Wait for the confirmation that the instrument has been found:



- 6 If the message does not appear within half a minute, check the connection to the instrument.
- b USB

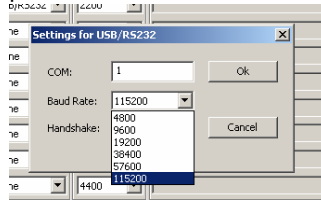
- 1 Select the COM port.

If any USB-to-RS-232 adapter is used, you can look up the COM port at: **Start > Control Panel > System > Hardware > Device Manager > Ports.**



Look for the CP210x USB to UART Bridge Controller connection and check which COM port it uses.

- 2 In the Settings for USB/RS232 menu, enter the COM port number. Select a baudrate of **115200**.



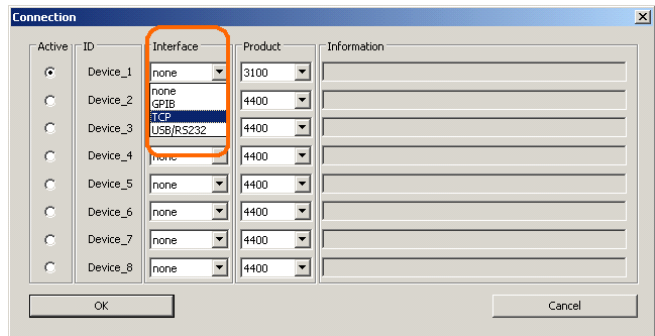
- 3 Click **OK**.
- 4 Click **OK** again to close the Connection menu.
- 5 Wait for the confirmation that the instrument has been found:



- 6 If the message does not appear within half a minute, check the connection to the instrument.

c TCP/IP

- 1 Select the interface: **TCP**.



Chapter 2 Installation

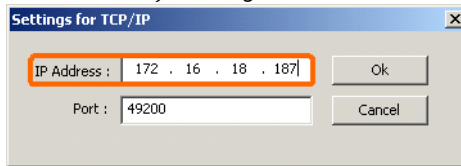
Setting up Lector with the 3100 Mobile Fault Finder

- 2 Check the IP address which is displayed in the acknowledge message displayed after connecting via USB or RS-232 (see [step a on page 21](#) and [step b on page 22](#)).



Use this IP address for the next steps.

- 3 Enter the IP address in the settings field for TCP/IP, and confirm by clicking **OK**.



- 4 Click the **OK** button in the Lector Connection pop-up menu.
- 5 Wait for the confirmation that the instrument has been found:



If the 3100 does not respond please check the connection to the instrument.

- 9 Continue with ["Installing the manufacturer-specific test scripts and the coupling factor database"](#) on page 26.

First steps

3

This chapter describes how to ensure that up-to-date manufacturer scripts and coupling values are being used, and how to start a first test. Topics discussed in this chapter are as follows:

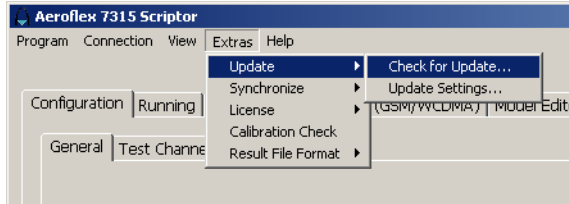
- [“Installing the manufacturer-specific test scripts and the coupling factor database” on page 26](#)
- [“Setting up and starting a test” on page 28](#)
- [“Finding unused channels for testing” on page 31](#)

Chapter 3 First steps

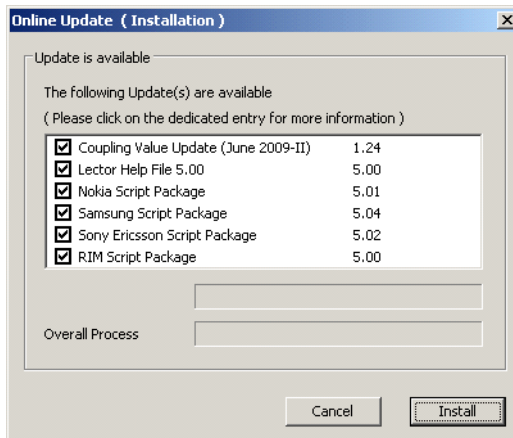
Installing the manufacturer-specific test scripts and the coupling factor database

Installing the manufacturer-specific test scripts and the coupling factor database

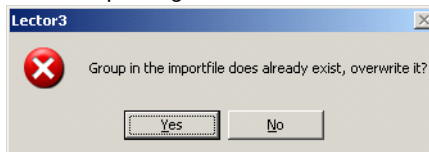
- 1 In Lector, select **Extras > Update > Check for Update**.



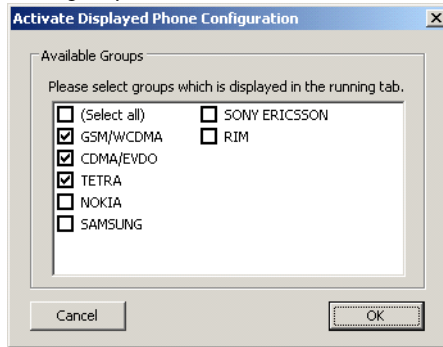
- 2 Follow the instructions, select all updates you need and click **Install**.



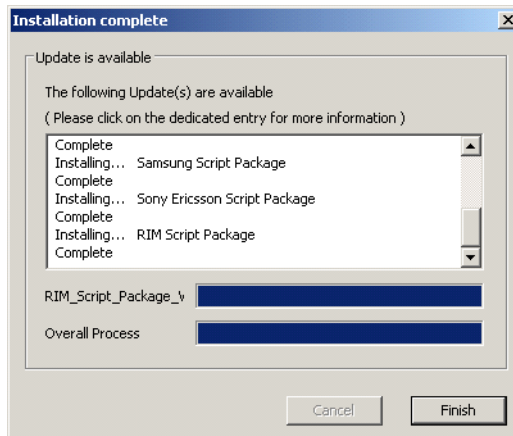
- 3 If the manufacturer script packages have been installed already, the following message appears. As long as you do not change the script packages, you can click **Yes** to overwrite the package.



- 4 To display the downloaded group, tick the required manufacturer group(s) and click **OK**.



- 5 When the update has been finished, click **Finish**. The latest manufacturer test scripts are now ready to be used.



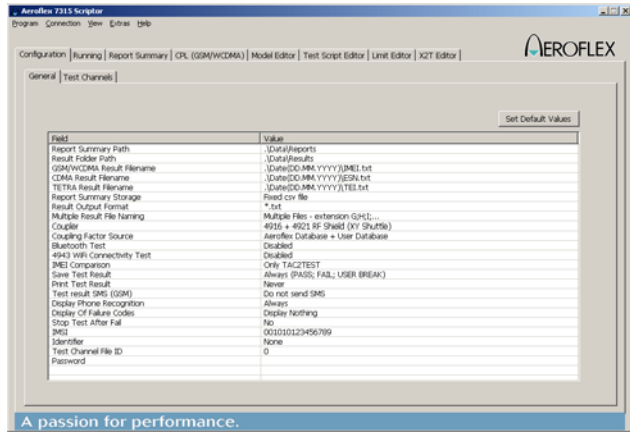
- 6 Proceed with [“Setting up and starting a test”](#) on page 28.

Chapter 3 First steps

Setting up and starting a test

Setting up and starting a test

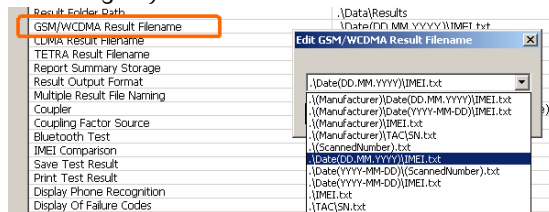
- 1 In Lector, go to the **Configuration** tab to set up the most important configuration items according to your system.



- 2 Check at least the following settings and change if necessary; open a selection box by double-clicking on the appropriate line. Each parameter is described in the help file under **Help > Help**.

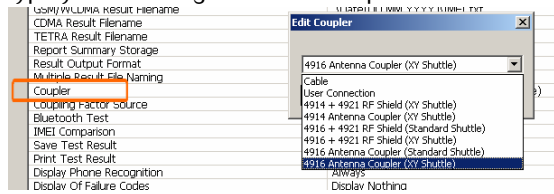
- a GSM/WCDMA Result Filename:

You can keep the default setting or change them according to your needs.







b Coupler

This setting is very important. Indicate which coupling type you are using to test mobile phones.



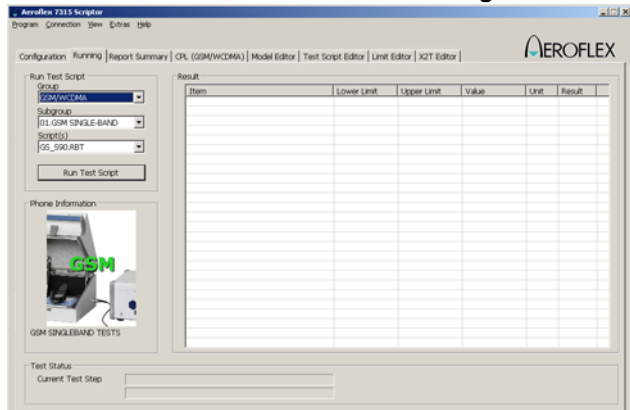
The coupling type can be identified using the following table:

	4916 + 4921 RF Shield (Standard Shuttle)	4916 + 4921 RF Shield (XY Shuttle)	4916 Antenna Coupler (Standard Shuttle)	4916 Antenna Coupler (XY Shuttle)
4921 RF Shield 	✓	✓		
4916 Antenna Coupler 	✓	✓	✓	✓
Standard Shuttle 	✓		✓	
XY Shuttle 		✓		✓

Chapter 3 First steps

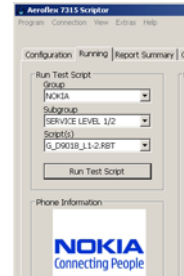
Setting up and starting a test

- 3 After the most important settings have been adjusted the test can be started. Therefore select the **Running** tab.



- 4 Select a Group, Subgroup and Test Script.
Example: In order to run a Nokia GSM Dualband test for Level 1/2 service centers, the following items need to be selected:
Group: Nokia
Subgroup:Service Level 1/2
Scripts: G_D9018_L1-2.RBT

- 5 In order to start the selected test script, click the **Run Test Script** button.



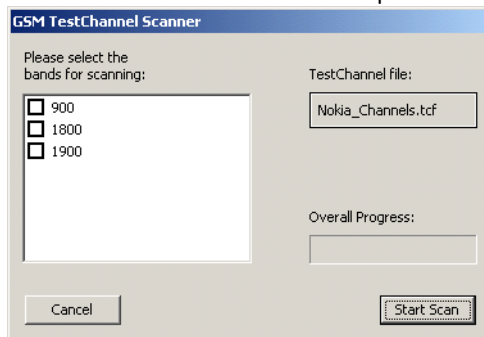
Finding unused channels for testing

If you are using the 4916 Antenna Coupler without the 4921 RF Shield you may face interference problems because the selected radio channel may also be used by a real base station. You can use the Channel Scan function within Lector to scan for unused channels.

- 1 Click on the **Configuration > Test Channels** tab.
- 2 Select the channel file depending on the test scripts you are using. In the following example, the channel scan for Nokia will be performed.



- 3 Click **GSM Channel Scan** to call up the channel scanner.



- 4 Select the bands on which to perform the scan, and click the **Start Scan** button. Follow the user instructions.

Chapter 3 First steps

Finding unused channels for testing

End-User License Agreement

A

This appendix describes the conditions for using the software.

Appendix A End-User License Agreement

All copyrights in and to the software product are owned by Aero-flex or its licensors. The software is protected by copyright laws and international copyright treaties, as well as other intellectual property laws and treaties.

This end-user license agreement grants you the right to use the software contained in this product subject to the following restrictions. You may not:

- (i) use the software and/or any copy of the software in different computers concurrently, unless the software is an update that has been downloaded from the Internet at www.aeroflex.com;
- (ii) copy the software, except for archive purposes consistent with your standard archive procedures;
- (iii) transfer the software to a third party apart from the entire product;
- (iv) modify, decompile, disassemble, reverse engineer or otherwise attempt to derive the source code of the software;
- (v) export the software in contravention of applicable export laws and regulations of the country of purchase;
- (vi) use the software other than in connection with operation of the product.

The licensor's suppliers do not make or pass on to end users or any other third party, any express, implied or statutory warranty or representation on behalf of such suppliers, including but not limited to the implied warranties of noninfringement, title, merchantability or fitness for a particular purpose.

Aeroflex shall not be held liable for any damages suffered or incurred by you or any other third party (including, but not limited to, general, special, consequential or incidental damages including damages for loss of business profits, business interruption, loss of business information and the like), arising out of or in connection with the delivery, use or performance of the software.

Publication History

Revision	Changes
0908-600-A	Initial revision.
1009-600-A	Updated layout.

Aeroflex and its logo are trademarks of Aeroflex Incorporated. All other trademarks and registered trademarks are the property of their respective owners.

Specifications, terms and conditions are subject to change without notice.

© Copyright 2010 Aeroflex GmbH. All rights reserved.

No part of this manual may be reproduced or transmitted in any form or by any means (printing, photocopying or any other method) without the express written permission of Aeroflex.

CHINA Beijing

Tel: +86 (10) 6539 1166
Fax: +86 (10) 6539 1778

CHINA Shanghai

Tel: +86 (21) 5109 5128
Fax: +86 (21) 6457 7668

FINLAND

Tel: +358 (9) 2709 5541
Fax: +358 (9) 804 2441

FRANCE

Tel: +33 1 60 79 96 00
Fax: +33 1 60 77 69 22

GERMANY

Tel: +49 8131 2926-0
Fax: +49 8131 2926-130

HONG KONG

Tel: +852 2832 7988
Fax: +852 2834 5364

INDIA

Tel: +91 (0) 80 4115 4501
Fax: +91 (0) 80 4115 4502

JAPAN

Tel: +81 3 3500 5591
Fax: +81 3 3500 5592

KOREA

Tel: +82 (2) 3424 2719
Fax: +82 (2) 3424 8620

SCANDINAVIA

Tel: +45 9614 0045
Fax: +45 9614 0047

SPAIN

Tel: +34 (91) 640 11 34
Fax: +34 (91) 640 06 40

UK Stevenage

Tel: +44 (0) 1438 742200
Fax: +44 (0) 1438 727601
Freephone: 0800 282388

USA

Tel: +1 (316) 522 4981
Fax: +1 (316) 522 1360
Toll Free: 800 835 2352

Manual ident: AG 294 310
Manual version: 1009-600-A

As we are always seeking to improve our products, the information in this document gives only a general indication of the product capacity, performance and suitability, none of which shall form part of any contract. We reserve the right to make design changes without notice. All trademarks are acknowledged. Parent company Aeroflex, Inc. ©Aeroflex 20 .

www.aeroflex.com
info-test@aeroflex.com